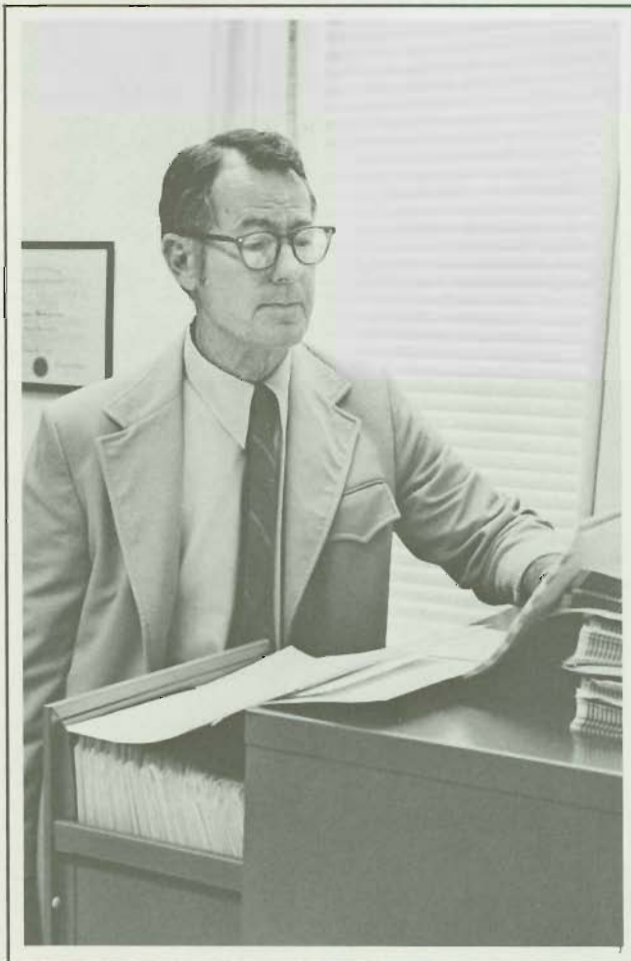


### Applicants

In the 1972-73 academic year the best qualified candidates in the history of the law school requested admission to the class entering in the fall of 1973. The average undergraduate grade point average and the average Law School Admission Test Score for those that have been admitted are 3.27 and 615 respectively. This compares with 3.14 and 614, then an all time high, for the class which entered in the fall of 1972.

A leveling-off in the number of applicants was experienced during the 1972-73 academic year. This followed several years of strong increases and can be attributed, in part, to self-elimination by those less qualified. This is indicated by a 4.5 per cent increase in the number of applicants who meet the minimum qualification for admission to law school.

Woodrow Cone, Director of Admissions



### Statistics

Statistics for the 1972 and 1973 classes compare as follows:

	September 1, 1973	1972
Applications	1537	1644
Accepted	393	377
Enrolled	240	241
Denied	1000	1165
Transfer applications	23	9
Transfer accepted	11	4

## Admissions

### Recruitment

Student recruitment efforts during the past year were concentrated in visits to predominantly black schools, women's colleges, and schools which have traditionally supplied the Georgia Law School with a high number of applicants.

Female law students made a significant contribution to our efforts to attract more women law school applicants. They have volunteered time, and in some instances the necessary expenses, to visit other campuses.

	1973	1972	1971	1970
Women Applicants	171	92	33	12
Enrolled	32	19	27	7
Black Applicants	63	37	28	5
Enrolled	8	4	7	4

Approximately 240 applicants have been admitted into the entering class each year since 1970.

Out-of-state acceptances are being monitored so as to have an instate vs. out-of-state ratio of 85% and 15% respectively. Out-of-state applications remain strong, increasing to 51% of the total this year.

In an effort to keep selections on a best qualified basis, the Admissions Committee has established a waiting list of candidates to fill vacancies created by cancellations. The current instate waiting list contains applicants who have average UGPA/LSAT values of 2.95 and 590 respectively. Corresponding values for the out-of-state waiting list candidates are 3.30 and 644.